

Knowledge Organiser

Topic: Plants

Year 2

Strand: Biology

What should I already know?

- **Plants** can grow.
- The names of some **common garden plants** (e.g. poppy, rose) and the names of some **common wild plants** (e.g. daisy, dandelion, nettle).
- **Deciduous trees** lose their **leaves** in the autumn every year.
- **Evergreen trees** have green **leaves** all year round.
- The parts of a plant including **petals, fruits, roots, bulbs, seeds, stem, trunks and branches.**

What will I know by the end of the unit?

Plants are living things and require things to grow.

- **Plants** require things such as water, warmth, **nutrients** from soil and light to grow.
- If they do not have one or more of these things, they may stop growing.
- **Plants** can:
 - move
 - grow
 - react to their surroundings (sense)
 - absorb **nutrients**
 - **reproduce**

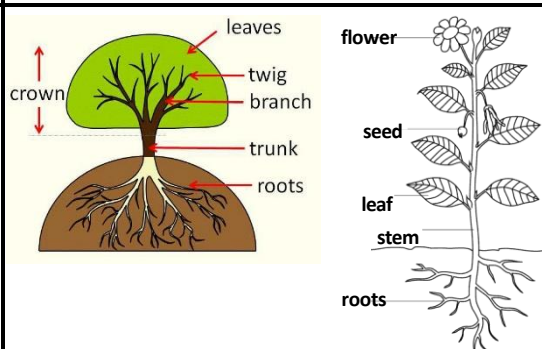
The conditions that plants need to grow.

- Energy is stored within a seed or bulb.
- Plants need: light, warmth and water to germinate and grow.
- What happens if a plant does not have one or more of these conditions.
- Not all plants need the same conditions to grow- some need more shade or less water than others.

The life cycle of a plant



What are the parts of **common trees** and **plants**?



Vocabulary



branches

parts that grow out from the **tree trunk** and have **leaves, flowers, or fruit** growing on them



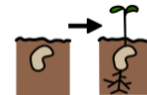
bulbs

a root shaped like an onion that grows into a **flower** or **plant**



deciduous

a **tree** that loses its leaves in the autumn every year



germination

process of a plant growing from a seed



flower

the part of a **plant** which is often brightly coloured and grows at the end of a **stem**



fruit

something which grows on a **tree** or bush and which contains **seeds** or a stone covered by a sub- stance that you can eat



leaves

the parts of a tree or plant that are flat, thin, and usually green



nutrients

substances that help plants and animals to grow



petal

thin coloured or white parts which form part of the **flower**



roots

the parts of a **plant** that grow under the ground



seed

the small, hard part from which a new **plant** grows



stem

the thin, upright part of a **plant** on which the **flowers** and **leaves** grow

